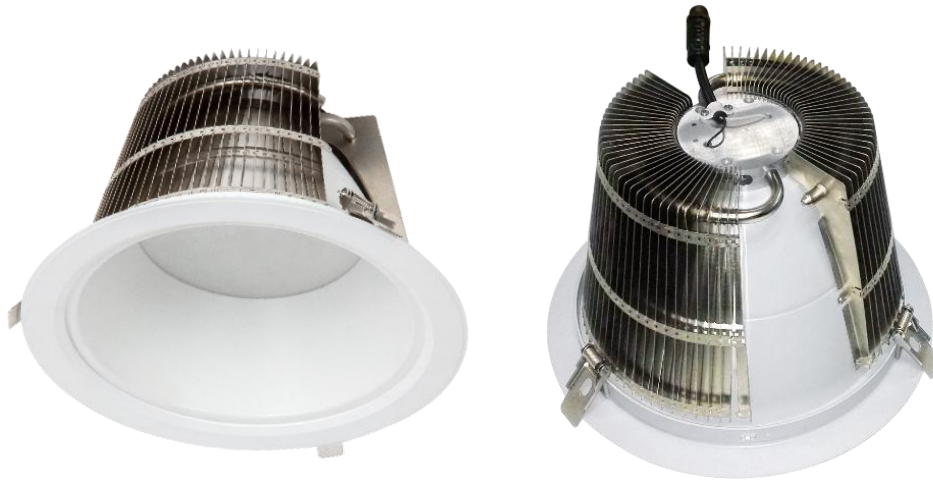


SONARAY

**NITOR LED
Downlight**

ECO Choice
2014/04





- UGR < 19
- CRI ≥ 85
- Rapid and efficient liquid cooling system
- Effective reflecting surface coating

Main Applications



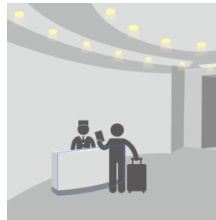
Shopping Malls Atrium



Airport Terminals



Show Room

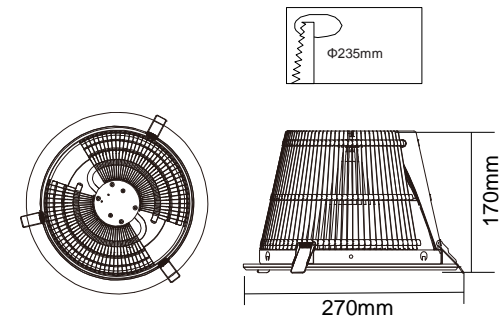


Hotel Lobbies

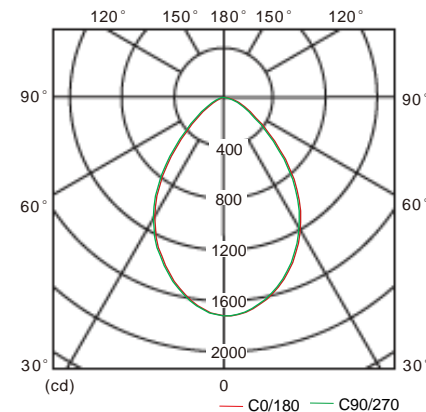
NITOR LED Downlight Specification

DL-3045

System Power: 45W
 Luminous flux: 3375lm
 Luminous efficiency: 75lm / w
 CCT: 5000K (Optional 3000K)
 CRI: ≥ 85
 Beam angle: 75 °
 UGR : < 19
 Material: Aluminum
 Power supply: External
 Input voltage: AC90-277V, 50/60Hz
 Output voltage: 30-40V
 Output current : 1.04A
 Power factor: ≥ 0.9
 Protection level : IP20
 Weight: 1.5kg
 Working temperature: -25 ° C ~ +40 ° C
 Average life: ≥ 50000hrs



Light Distribution Map



Illuminance Distribution

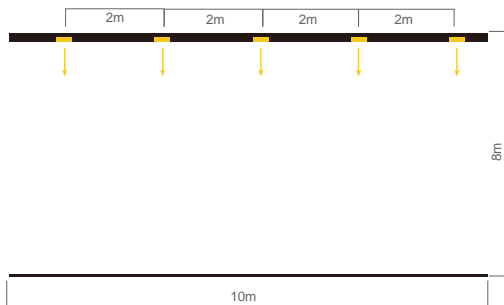
H(m)	E(lx)	D(cm)
1	1648	244
2	412	489
3	183	733
4	103	977
5	66	1221



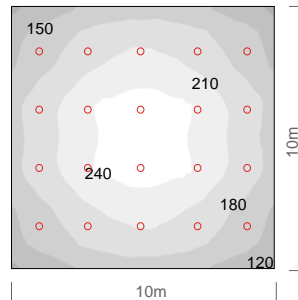
Design Space Size : L10 W10 H8(m)

Design illumination : 200lx

Vertical section



Horizontal illuminance distribution



※The curve graph shows the illumination unit : (lx)

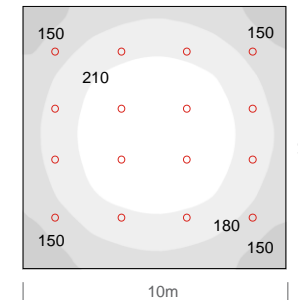
Lamp	Traditional Lamp
Light Source	CMH
Luminous flux (lm)	5120
Lifetime (hrs)	8000
Installation Height (m)	8
Maintained average illuminance (lx)	195
Total Power (W)	1740



NITOR 10寸 45W LED Downlight
(DL-3045)

Equivalent of one to one replacement
110W Ceramic Metal Halide Lamp

Horizontal illuminance distribution



※The curve graph shows the illumination unit : (lx)

Lamp	DL-3045
Light Source	LED
Luminous flux (lm)	3375
Lifetime (hrs)	50000
Installation Height (m)	8
Maintained average illuminance (lx)	203
Total Power (W)	720

Same Brightness

Energy saving 60%

Reduce 4 sets of fixture

5 times longer lifetime

※ The traditional lamp power of light source is about 80% of the Total Power ..
 ※The luminous flux of whole lamp is about 50% of light source.